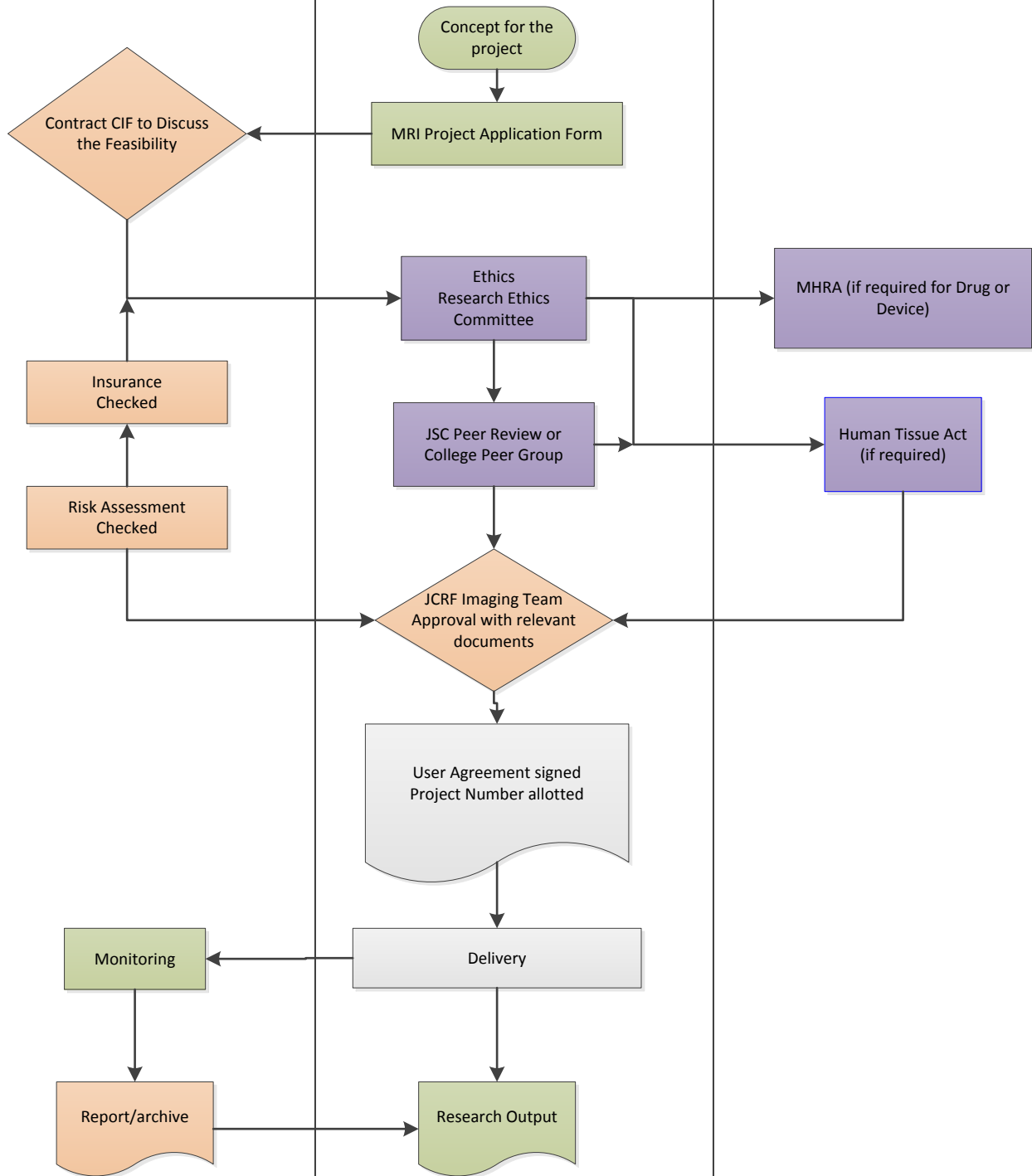


# Clinical Imaging Facility Pathway for a Research Project on Healthy Volunteers Only

Contact [paola.a.griffiths@swansea.ac.uk](mailto:paola.a.griffiths@swansea.ac.uk)

JCRF-Imaging Team	Principle Investigator or collaboration group	Regulatory Requirements
-------------------	---	-------------------------



**Any project involving patients as participants will need to go through ABMU R&D Process**  
 Contact [Jemma.Hughes@wales.nhs.uk](mailto:Jemma.Hughes@wales.nhs.uk)