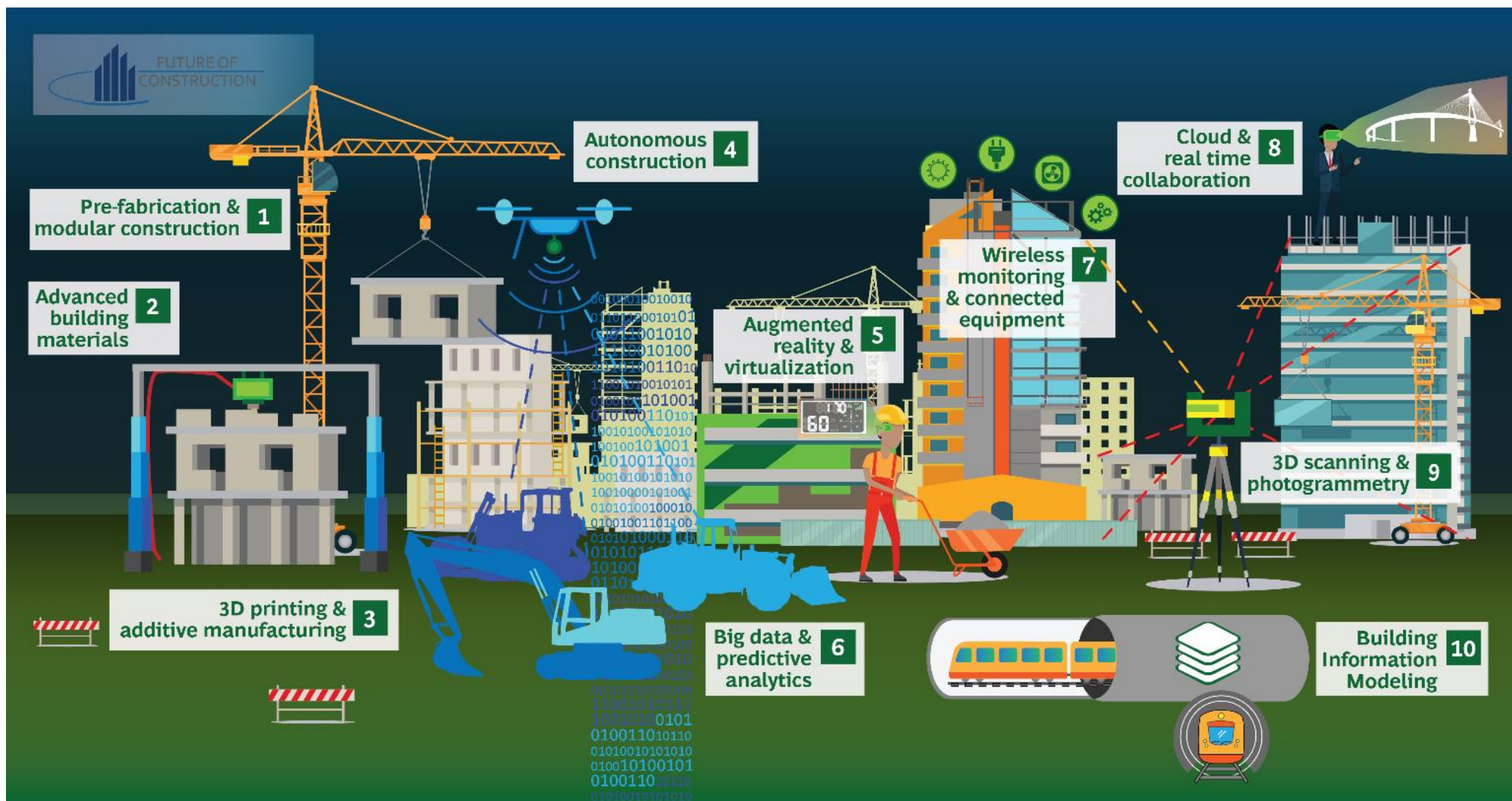


Acting **today** for a  
better **tomorrow**

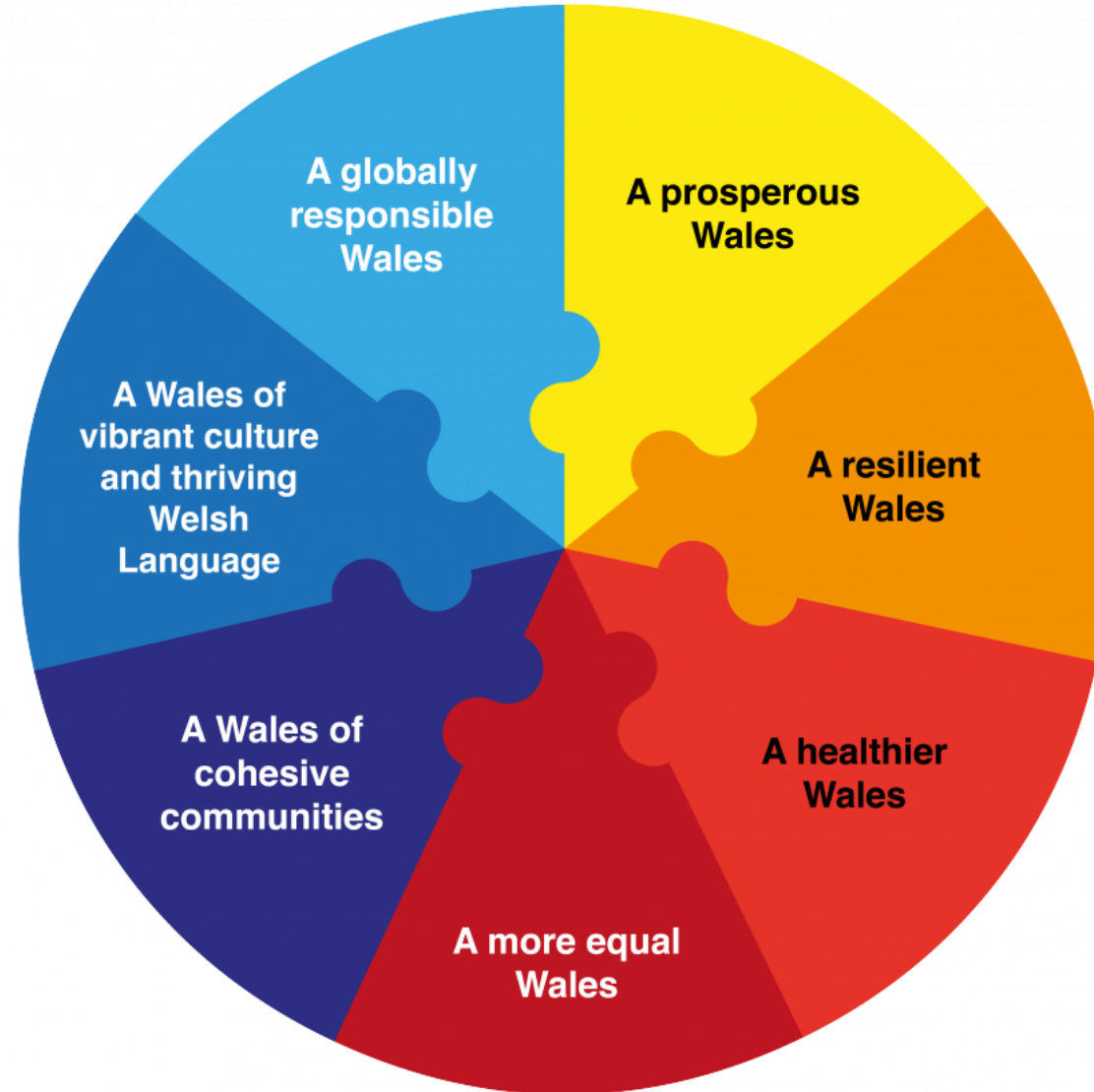


Comisiynydd  
**Cenedlaethau'r  
Dyfodol**  
Cymru

**Future  
Generations**  
Commissioner  
for Wales



# The Well-being of Future Generations Act



[cenedlaethaurdyfodol.cymru](http://cenedlaethaurdyfodol.cymru) | [futuregenerations.wales](http://futuregenerations.wales) | [@futuregenymru](https://twitter.com/futuregenymru)

## **A prosperous Wales**

An innovative, productive and low carbon society which recognises the limits of the global environment and therefore uses resources efficiently and proportionately (including acting on climate change); and which develops a skilled and well-educated population in an economy which generates wealth and provides employment opportunities, allowing people to take advantage of the wealth generated through securing decent work.

# The Five Ways of Working



## Long-term

The importance of balancing short-term needs with the needs to safeguard the ability to also meet long-term needs



## Integration

Considering how the public body's well-being objectives may impact upon each of the well-being goals, on their objectives, or on the objectives of other public bodies



## Involvement

The importance of involving people with an interest in achieving the well-being goals, and ensuring that those people reflect the diversity of the area which the body serves



## Collaboration

Acting in collaboration with any other person (or different parts of the body itself) that could help the body to meet its well-being objectives



## Prevention

How acting to prevent problems occurring or getting worse may help public bodies meet their objectives



**Failing to put low carbon as a central pillar of the Cardiff City Deal programme would be both environmentally and economically irresponsible,” says Sophie Howe, Future Generations Commissioner for Wales.**

“Not only should the aspirations for the City Deal be centred around a low carbon economy but it must demonstrate that it works for everyone, that it tackles persistent poverty, ill health and poor life chances in all parts of the region, rather than focusing on shiny new town and city centre infrastructure.

# Transport for Wales

## A globally responsible Wales

- Energy for stations and the overhead wires will come from 100% zero carbon energy, with at least 50% sourced in Wales
- Supporting sustainable, socio-economic development through our procurement approach
- Develop 1500 additional park and ride spaces across Wales to encourage rail travel
- Investing £738m to electrify the Central Metro network

## A Wales of vibrant culture and thriving Welsh language

- Promoting the continued revival of the Welsh language through bilingual customer information, a contact centre and supporting the National Eisteddfod
- Fund all staff who want to learn Welsh and support them to learn
- Providing access to Wales' vibrant culture and natural heritage working with Visit Wales to develop a new rail and tourism strategy

## A Wales of cohesive communities

- Employing Customer and Community Ambassadors to encourage a greater sense of community around the rail network
- Improve business opportunities for local SME's/TSE's based in Wales
- Doubling the number of Community Rail Partnerships, with 90% of stations to be adopted

- Competitive dialogue
- Starting point: 5 WoW & 7 WB Goals

## A prosperous Wales

- Create 600 new jobs, investing in 30 apprenticeships every year
- Moving the Keolis UK headquarters and Global Rail Division to Wales
- Building a new Amey design office in Wales
- 95% of journeys will be made on brand new trains
- We will increase capacity by 65%
- We will create a true 7-day railway with new Sunday and Bank Holiday services

## A resilient Wales

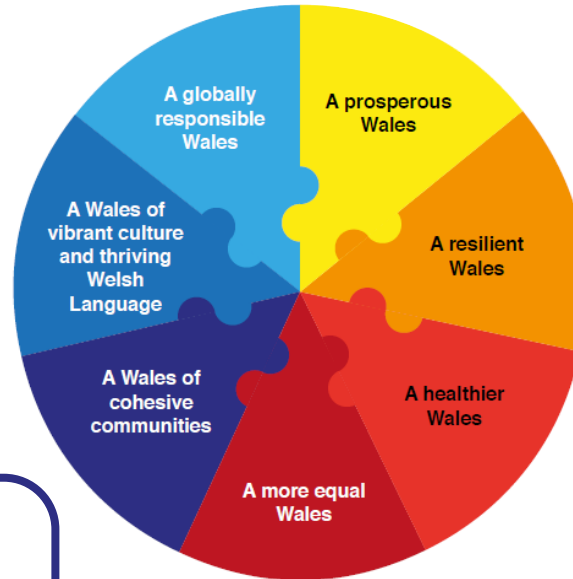
- Encouraging use of public transport e.g. via integrated journey planning tools promoting onward travel and off-peak/advanced fares
- More than 50% of new trains will be assembled in Wales
- Investing £194m in building new and upgrading existing stations

## A healthier Wales

- Promoting active travel, new cycle storage and safe, well-lit walking routes to encourage people to make healthier choices
- Community Ambassadors working with local communities, encouraging and training people to use the rail network
- Mental health awareness training for all staff

## A more equal Wales

- Developing a new fares structure to ensure price is not a barrier to using the network
- Become an accredited Living Wage employer by 2021 to be cascaded through our supply chain
- During off-peak, cheaper fares will be introduced including, under 16s being able to travel free with a paying adult, and the age limit for half fares will be increased from 16 to 18 across Wales
- Close working with Disability groups to improve accessibility and set up a new accessibility panel for ongoing input





[cenedlaethaurdyfodol.cymru](http://cenedlaethaurdyfodol.cymru) | [futuregenerations.wales](http://futuregenerations.wales) | [@futuregencymr](https://twitter.com/futuregencymr)



Diolch yn fawr  
Thank you

