

SEPTEMBER'24

PARTICIPATION
@CAMPUSLIFE



SEPTEMBER/MEDIA

Hello! Swmae! Welcome to your September update from me and Participation! Here we are at the start of a new Academic year once again. Some of you will have already started meeting your faculty and others on your course, or getting right back into your studies and for those of you just joining us in Swansea, it's such an exciting time. I'm just here to offer some suggestions to help you make the most of this new start to the year. I hope it's fabulous for you!

STUDENT FINANCE APPLICATIONS

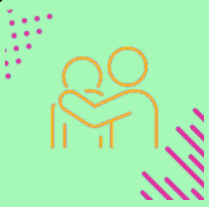
It is incredibly important that if you haven't already done so, that you submit your student finance application as soon as possible. It may seem obvious, but you must re-apply for funding for each year of study. If you haven't already submitted your application or are having difficulty with it, please get in touch and I will be happy to help wherever I can. It is important that if you have not received confirmation of your funding for this academic year that you DO NOT ENROL until this is confirmed.



WHAT'S ON?



NEED SUPPORT?



There are some fantastic resources across the university if you need help. Whether you're finding things hard and need someone to talk to, or if you need advice and guidance on something specific, these resources are there for you if and when you need them. Click the links to find out more.



CONSENT TO SHARE

We have made some changes to our consent to share processes. If you have ever been in touch and we have needed to refer you to another service within the uni, or speak to your social worker, you will have filled in a form to allow us to do this. Previously these forms were only valid for a set period of time, however we have updated this process to last for the duration of your studies. You are absolutely welcome to opt out of this at any time, or not give consent at all. I will be in touch to ask you to meet with me to complete these forms and to generally check in over the coming weeks.

CONFIRMATION OF ESTRANGEMENT

For students who have previously given evidence of estrangement, please check this to ensure it states 'for the duration of your studies'. If it states 'for the academic year' you will need to provide evidence again and I am more than happy to help you with this however I can. Pop me an email if you need a hand and we can arrange a chat to see what you need to provide. In the same way, if your circumstances have changed please pop me an email.

BUDDY NETWORK

Last year the Buddy Network was launched at Swansea to help people get connected with others across the university. It works in a similar way to a matchmaker, where you put in your details and interests and the network matches you with contacts that have things in common. They then give you contact details and meet up suggestions, as well as events specifically for 'buddy' connections. If you're feeling a little anxious about making connections, it's a really lovely way to get to meet others. The link is in the title and in the picture.



SOCIETIES AND SOCIALS

Joining a society is a really great way of getting to meet and know others at uni with at least one thing in common. At Swansea, there are over 150 societies to join, ranging from sports, to the adventurous, to cultural and ethnic groups, to specific interests.

Did you know that the student union provide backing for any new societies looking to establish themselves? So even if there isn't something that takes your fancy, or if you have a burning idea, you can make it happen.



STUDENT ID CARDS

When you arrive on campus and begin the moving process, it is so important that you also collect your student ID card. These are usually issues by our absolutely lovely and fantastic library teams, both on Bay and Singleton, who will just snap your photo and get your card sorted for you. Make sure to grab yours!



FRESHER RECS

For those of you who are already settled into Swansea life, cast your mind back to when you first arrived in the city or on campus. What do you wish you could have known then that you know now? Where can you get the best coffees and hot chocolates? Where is the best place to meet friends to study? What tips do you wish someone had given you? I've created a suggestions box for your fresher recs and I'd love to see what you suggest!

UPCOMING PROJECTS IN PARTICIPATION

As many of you know, I started in this role at the University in November and have been asking for your thoughts and looking for ways to add to and improve the service and options available through participation. There are some very exciting projects in the pipeline, including links to community resources and vital information sessions, as well as some more social ideas for the upcoming year. As always, I would love to hear what you think and if you have any thoughts on what I can do to shape Participation to what you want and need from it. Please get in touch! Over the next few weeks I'll be putting together a calendar of events and drop ins, so keep an eye out for this in your inbox!

SUPPORT SERVICES FAIR

Every term there is a university support services fair, where all the different options and departments for support get together to let you wander around and ask questions, have a chat and get to know what is out there in the university to help you if you need it. The next one is on 10th of October on Singleton in the Taliesin!

These links are for organisations that support specifically for care leavers and people who are estranged, if you would like to know more about them click on the links.



CLASS
CYMRU

propel
BY BECOME.

If you do not wish to receive these newsletters, please opt out by emailing participation.campuslife@swansea.ac.uk