

Applying for Swansea University Sponsorship

SU Approval criteria

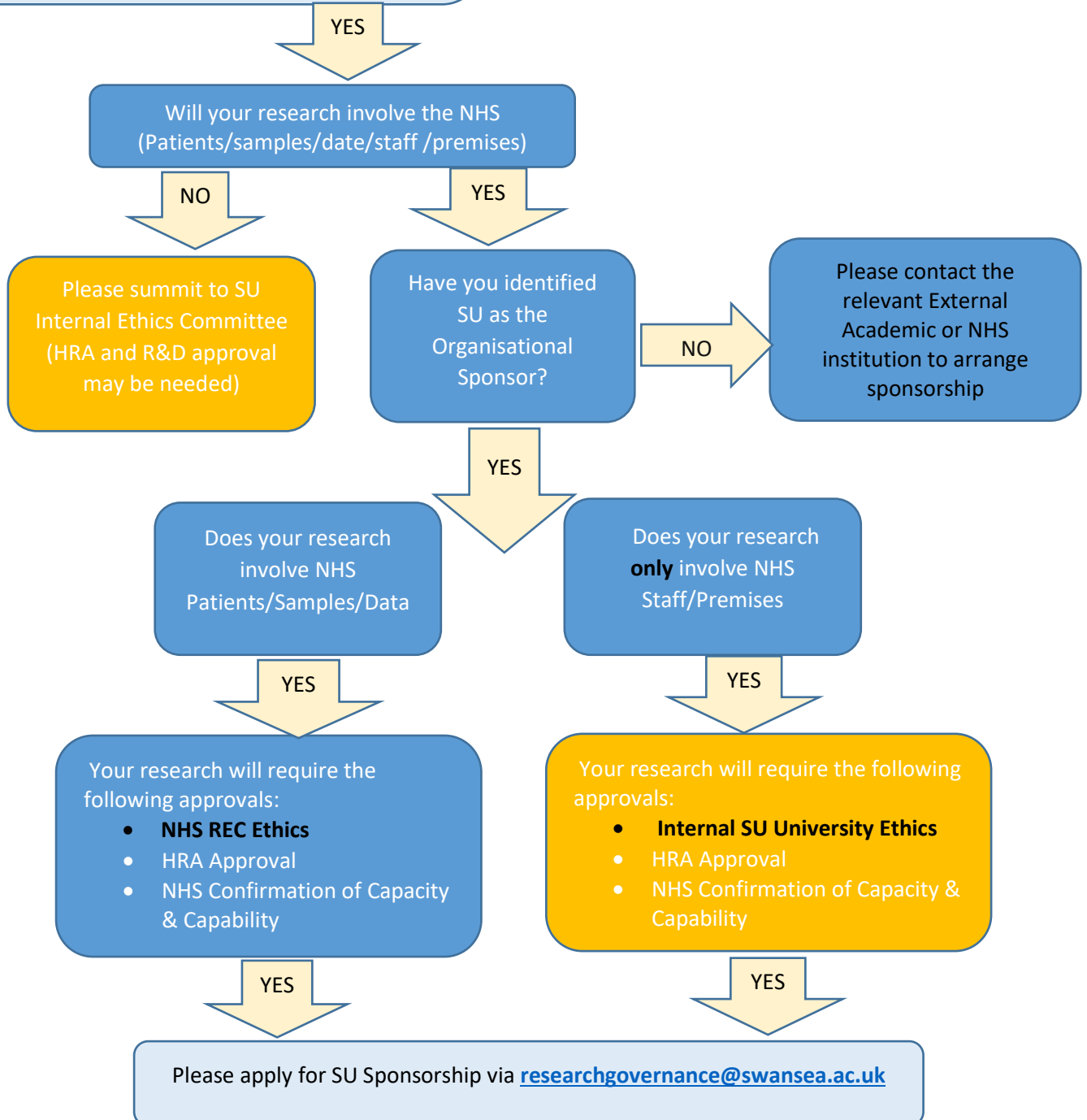
Chief Investigator or Academic Supervisor if a student project who holds a substantive employment contract, or appropriate honorary title with Swansea University.

SU to be Organisation Research Sponsor

SU Exclusion criteria

Commercial project where the company has designed the protocol/ own the data/intellectual property generated.

External Organisation to Sponsor



Once the researcher obtains **ALL** approvals, a **Sponsor Green Light email** will be issued and only then can the study commence recruitment. If you have any queries or require help please contact researchgovernance@swansea.ac.uk